

ZS30

INDUSTRIAL JOYSTICK

SAEKAI

The ZS30 joystick boasts an ergonomic design, offering multi-axis, grip-type operation and a robust handle suitable for harsh environments. It utilizes contactless Hall technology, ensuring high reliability, and features long-life electronic components with IP67 protection. Ideal for maritime operations, aerial work platforms, and harvesting equipment, this joystick excels in precise control and durability in demanding industrial settings.

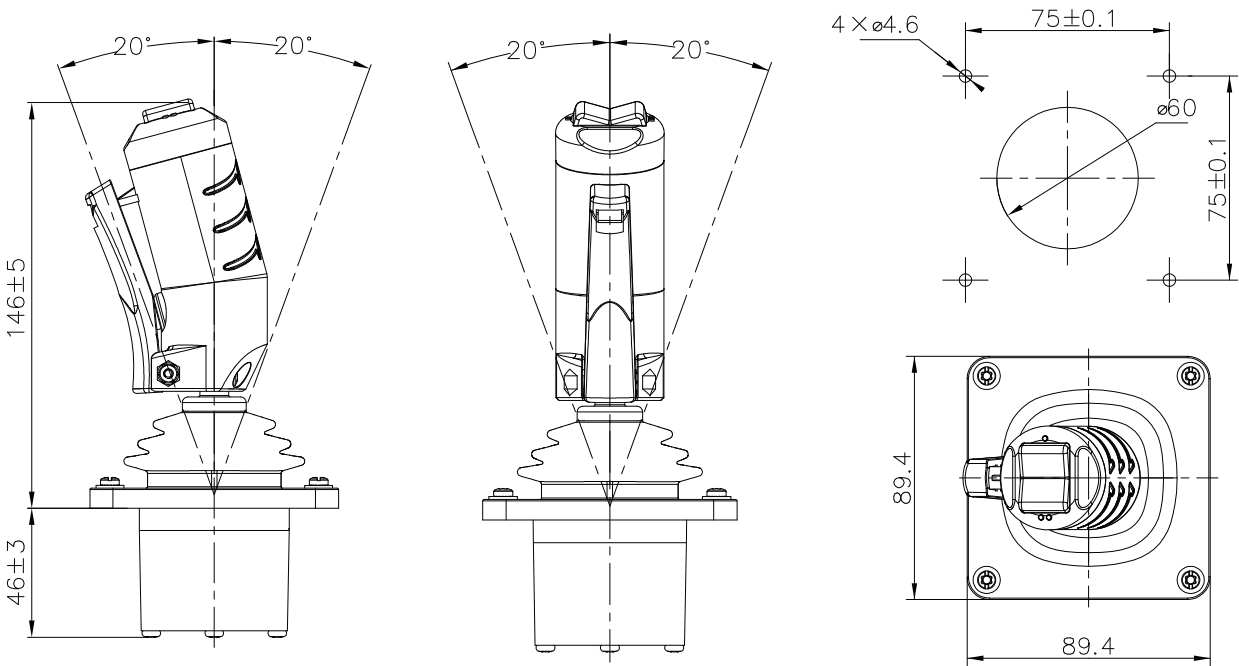
Technical Data

|                   |   |
|-------------------|---|
| Operating Force:  | 8N  |
| Service Life:     | Up to 1 million cycles  |
| Operating Temp:   | -40°C to +70°C  |
| Protection Class: | Up to IP67  |
| EMC Compliance:   | EN61000-6-4:2007, EN61000-6-2:2019 (Frequency ranges 30MHz-1GHz and 80MHz-6GHz) |



| Selection   | Palm Grips | Gate | Movement | Axis 1<br>Interface | Axis 2<br>Interface | Wiring |
|---|------------|------|----------|---------------------|---------------------|--------|
| <ul style="list-style-type: none"><li>• KW: safety switch+ rocker switch</li><li>• K: safety switch,without rocker switch</li><li>• W: without safety switch,rocker switch</li></ul> See more options in the grip section |            |      |          |                     |                     |        |
| <ul style="list-style-type: none"><li>• 1 -Axis ↑</li><li>• 2 Cross gate ⇄</li><li>• 3 All-direction(X, Y-Axis) ※</li></ul>   |            |      |          |                     |                     |        |
| <ul style="list-style-type: none"><li>• Z: Spring return</li></ul>  |            |      |          |                     |                     |        |
| <ul style="list-style-type: none"><li>• Hall output DC5V</li><li>HV1:0-2.5-5V</li><li>HV2:0.5-2.5-4.5V</li><li>HV3:1.0-2.5-4.0V</li><li>HV4:1.25-2.5-3.75V</li><li>HV5:1.15-2.5-3.85V</li></ul>                           |            |      |          |                     |                     |        |
| <ul style="list-style-type: none"><li>• Hall output DC5V</li><li>HV1:0-2.5-5V</li><li>HV2:0.5-2.5-4.5V</li><li>HV3:1.0-2.5-4.0V</li><li>HV4:1.25-2.5-3.75V</li><li>HV5:1.15-2.5-3.85V</li></ul>                           |            |      |          |                     |                     |        |
| <ul style="list-style-type: none"><li>• C: Connector</li><li>• L: Direct outgoing line</li></ul>  |            |      |          |                     |                     |        |

Dimensions



Grip

