

AT40

SAEKAI

COMPACT LIGHT JOYSTICK

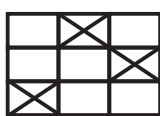
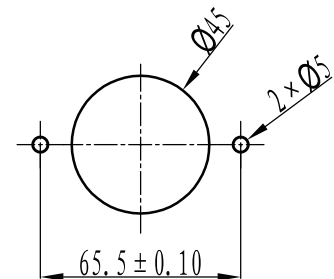
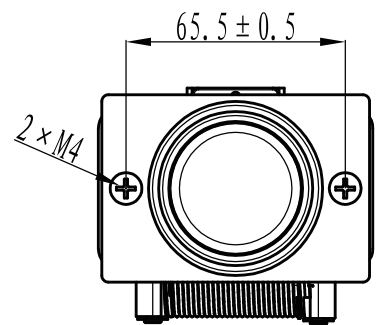
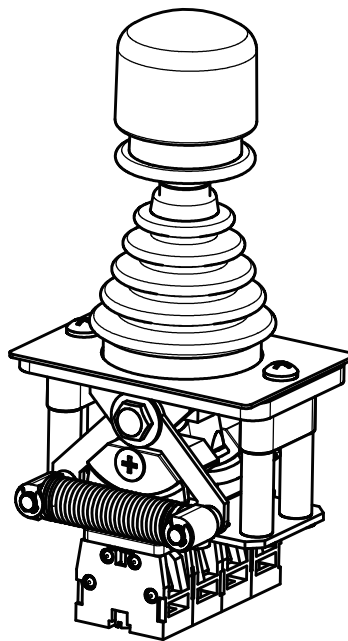
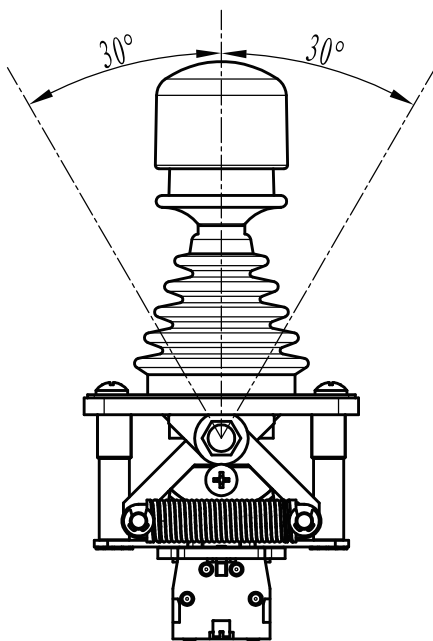
The AT40 joystick features a compact design, light and straightforward structure, enhancing ease of operation. Equipped with a zero position spring return and a self-locking mechanism, it ensures safety and reliability. It boasts a long service life and offers easy wiring, convenient installation, and low maintenance. This product line is primarily used in cranes, construction machinery, and various automated control systems

Technical Data

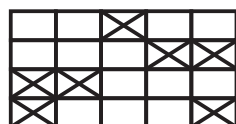
Operating Temperature:	-20°C to 60°C
Handle Operating Force:	≤20N
Mechanical Life:	1M
Power:	AC 2.6A / DC 0.3A
Rated Current:	15A
Rated Voltage:	380V (440V)



Dimensions



A10



A20