

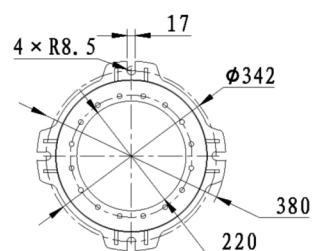
CONTROL CONSOLE

The EOS-U crane console is engineered for AC 50Hz (60Hz) control circuits, accommodating a rated voltage of up to 380V (440V). It facilitates the control of motor start, speed regulation, commutation, and braking in crane machinery and related electrical control systems.

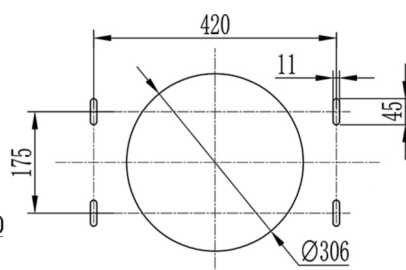
Control Box

Constructed from steel plate, the control box features a hinged cover equipped with a standard locking function for simplified inspection and maintenance. The configuration of the joystick, indicators, and control elements is tailored to meet the specific requirements of the client.

⚙ Dimensions



rotating base mounting



fixed base mounting

