

WK05

FINGERTIP JOYSTICK

SAEKAI

- **Compact Design:** Ideal for control panels and armrests.
- **Reliability:** Uses non-contact Hall effect sensors for enhanced durability.
- **IP67 Protection:** Resistant to dust and water, suitable for harsh environments.
- **Custom Configurations:** Options for spring return, detents, and variable resistance.
- **Custom Colors:** Handles available in various colors to fit design preferences.



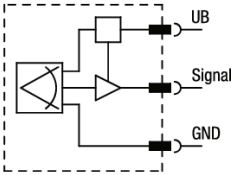
Applications

- **Industrial Controllers:** Suitable for a range of industrial remote controls.
- **Control Panels:** Integrates seamlessly into various control systems.
- **Armrests:** Perfect for machinery and equipment armrests.

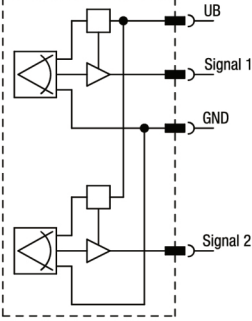
Selection	Hardware	Movement	colour	symbol	Connection
<ul style="list-style-type: none">• 0: Analog• 1: Semi-redundant• 2: Redundant					
<ul style="list-style-type: none">• ZB Spring return ↕• ZU Spring return ↑• DL Dual-end locking with spring return• OL One-end locking with spring return• F Friction brake without detent• FD Friction brake with middle detent		<ul style="list-style-type: none">• R3 3 position detent• R5 5 position detent• R4 4 position detent with dual-end locking• FR3 3 position detent with friction brake• FR5 5 position detent with friction brake			
<ul style="list-style-type: none">• 1: Red RAL3001• 2: Green RAL6010• 3: Yellow RAL1023• 4: Blak RAL9005• 5: Blue RAL5005• 6: Orange RAL2010• 7: Gray..RAL7043• 8: White					
<ul style="list-style-type: none">• N: No symbol• S: Special design					
<ul style="list-style-type: none">• 00: 250MM Standard Cable• 01: Deutsch DTM connector					

Dimensions

Analogue



Analogue semi-redundant



Analogue redundant

